

Trimble 4D Control

MONITORING SOFTWARE

DECEMBER 2021

AUTOMATED MOVEMENT DETECTION WITH CONFIDENCE

T4D CONTROL ENABLES AUTOMATED MOVEMENT DETECTION WITH CONFIDENCE FOR SURVEYING AND CONSTRUCTION PROFESSIONALS SUPPORTING INFORMED DECISIONS ABOUT INFRASTRUCTURE.

The main benefits of the T4D platform at its core are:



Sensor Management and Data Integration:

Connect, control, and configure your sensors. Trimble® 4D Control™ (T4D) software enables automated integration of geospatial and geotechnical data in one platform.



Comprehensive Analysis and Visualization:

T4D provides a complete tool set for visualizing data and combining inputs to generate meaningful analysis to develop key insights. This provides flexibility and power to support informed decision making on monitoring projects.



Geodetic Processing and Adjustment:

T4D is the only software that combines GNSS, total station and geotech with geodetic processing in a single environment allowing for highly accurate processing.



Conditional Alarming and Reporting:

T4D enables you to receive timely updates and share mission critical warnings and deliverables with project members within moments of a triggered alarm. Schedule critical updates and reports to any number of project members providing transparency on project movement.

Flexible licensing options for every project type

- ▶ Every monitoring project is different, requiring adaptive techniques for installing and deploying an automated movement detection system. T4D offers flexible licensing to handle any project length and size. Choose from a one or twelve month subscription or perpetual license.

Automated or semi-automated monitoring, there's a tool for you

- ▶ T4D can handle any monitoring project whether it requires real-time alarming or manual project reporting. In an automated setup no user interaction is required after installation and setup. Data automatically flows from all connected sensors and in case of movement detection, users are immediately notified via SMS or email. For semi-automated (also known as campaign monitoring) applications, combined with Trimble Access Monitoring field software, T4D provides total station processing and adjustment modules that can manually or automatically import raw measurements to report on displacements across the project site.

Start monitoring now with simplified deployment and installation

- ▶ Deploy automated monitoring systems on-site using local servers or simplify deployment and reduce IT complexity and infrastructure using cloud-based hosting of T4D through Microsoft® Azure. This capability is especially beneficial for short projects where the cost of physical servers is substantially higher than the cloud-based server. Microsoft Azure SQL database ensures that the installation process of T4D Server is identical to a physical installation.

On-site support, training, and installation so you don't have to worry

- ▶ Trimble's worldwide technical support team is available to support you throughout the project from installation to training. Schedule an on-site installation and training session with a knowledgeable Trimble Monitoring technician.



SENSOR MANAGEMENT AND DATA INTEGRATION

T4D ENABLES AUTOMATED INTEGRATION OF GEOSPATIAL AND GEOTECHNICAL DATA IN ONE PLATFORM.

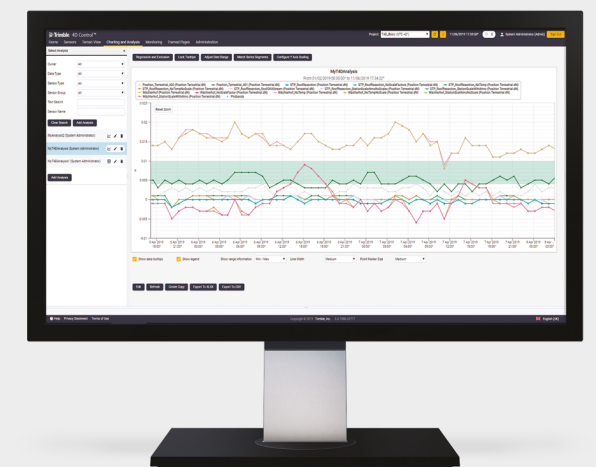
- ▶ Integrate geodetic sensors such as total station, GNSS, and level with geotechnical sensors like inclinometers, tiltmeters, weathers and more, in one platform
- ▶ Integrate geotechnical sensors using file-based upload or stream directly from a Trimble, Worldsensing, or Senceive Gateway
- ▶ Enhance data analysis by incorporating environment sensors such as weather stations and THP devices
- ▶ Visualize movement in context of the project site using background maps and imagery

PROJECT EXAMPLE

NAME: Victoria Dam, Sri Lanka

GOAL: Monitor movement in the tall concrete curvature dam in Sri Lanka for structural analysis and failure prediction.

TRIMBLE ADVANTAGE: Increased data confidence and reporting by combining new and existing site sensors in one platform — T4D; including GNSS, total station, level, and geotechnical for alarming and analysis.





GEODETIC PROCESSING AND ADJUSTMENT

T4D IS THE ONLY SOFTWARE THAT COMBINES GNSS, TOTAL STATION, AND GEOTECHNICAL SENSORS WITH GEODETIC PROCESSING IN A SINGLE ENVIRONMENT ALLOWING FOR ACCURATE PROCESSING AND CONFIDENCE IN THE RESULTS.

- ▶ Robust coordinate system management and survey data processing
- ▶ Combined and integrated network adjustment
- ▶ Total station round management and automatic environmental corrections
- ▶ Multiple GNSS RTK engine and static baseline processing



COMPREHENSIVE ANALYSIS AND VISUALIZATION

VISUALIZE DATA AND COMBINE INPUTS FOR MEANINGFUL ANALYSIS TO GAIN KEY INSIGHTS TO PROJECT MOVEMENT.

- ▶ Multiple visualization options using a variety of chart and report methods
- ▶ Create comprehensive analysis and reporting for displacement measurements, velocities, and inverse velocities alongside environmental variables such as temperature and pressure
- ▶ View movement data in context of multiple map base layers using Google Maps, Microsoft Bing, and WMS
- ▶ Live data updates for analysis and visualization methods
- ▶ Generate unique analysis relative to a design alignment or orientation such as a road, rail or tunnel, providing context to movement patterns

PROJECT EXAMPLE

NAME: Landslide monitoring in Kostanjek

GOAL: Real-time transmission, processing, and analysis of GNSS movement data using real-time and post-processed engines for in depth analysis of movement trends and creating accurate landslide forecast models.

TRIMBLE ADVANTAGE: Accurate, ongoing measurement using multiple GNSS processing and adjustment engines to analyze slope movements.

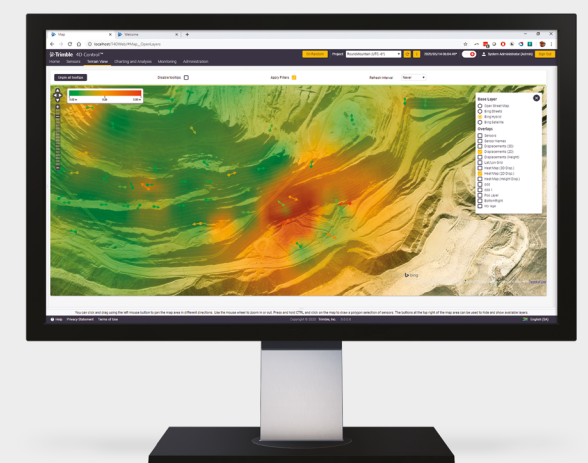
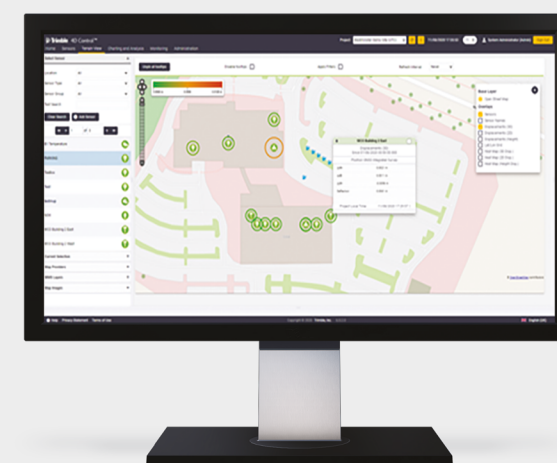
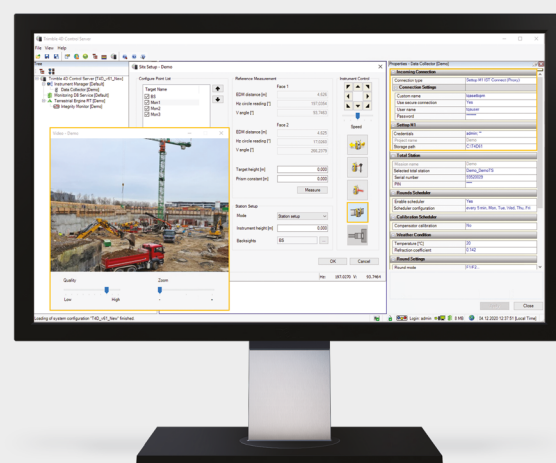
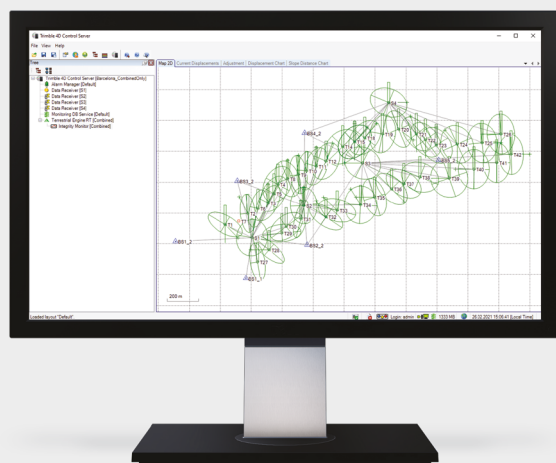


PROJECT EXAMPLE

NAME: Mae Moh Coal Mine

GOAL: Monitoring slope stability to analyze and predict failures to ensure mine safety.

TRIMBLE ADVANTAGE: Generated comprehensive reports and analysis that provided informed decision making for slope failure prediction using inverse velocity analysis.





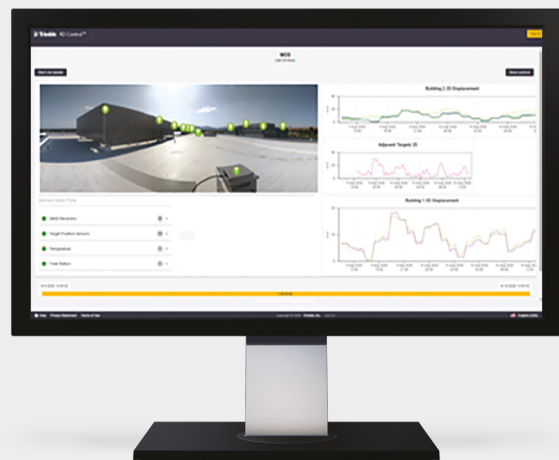
CONDITIONAL ALARMING AND REPORTING

T4D ALLOWS FOR TIMELY UPDATES AND SHARING MISSION CRITICAL WARNINGS AND DELIVERABLES WITH ANY PROJECT MEMBER.

- ▶ Create complex real-time alarming conditions through scalable mathematical operations to notify any stakeholders of movement or system outages
- ▶ Combine any data type to generate alarms from velocity and inverse velocity calculations
- ▶ Define notification types via SMS or email method
- ▶ Schedule report intervals to notify operators of system status
- ▶ Generate custom views to simplify on-site conditions for stakeholders or public viewing

PROJECT EXAMPLE

- NAME:** Brisbane Skytower
- GOAL:** Monitor the real-time position of high-rise construction cranes to provide automatic alarming when entering airspace restricted areas.
- TRIMBLE ADVANTAGE:** Create complex conditions for notifying stakeholders with SMS, email, visual, and audible alarms for geodetic and geotechnical sensors



LEARNING RESOURCES

MONITORING DEMO SITES:

- ▶ Check out a live T4D automated monitoring system showing real-time data analysis on the Trimble Monitoring website. Want a live demonstration of T4D? Reach out to us to schedule an overview.

<https://monitoring.trimble.com/demo-site>

WEBSITE:

- ▶ The Trimble Monitoring website has a wealth of information such as customer projects, downloads, and support information. See a live automated monitoring system where T4D is being used to collect, process, and analyze multiple geodetic and geotechnical sensors in real-time.

<https://monitoring.trimble.com>

POWER HOURS:

- ▶ A live monthly session where a Trimble or industry expert showcases a workflow using Trimble Monitoring systems. All sessions are available afterwards and on-demand, for free:

<https://geospatial.trimble.com/webinars/monitoring>

YOUTUBE CHANNEL:

- ▶ Watch and learn as our team explains how a specific function works or what's new in the latest releases:

<https://www.youtube.com/TrimbleMonitoring>

TRIMBLE COMMUNITY PAGE:

- ▶ Join your fellow monitoring professionals and ask questions, showcase a project, and learn from peers in this open online forum:

<https://bit.ly/TrimbleMonitoringCommunity>

SYSTEM REQUIREMENTS

T4D Control runs on the latest versions of Windows® 10 operating system.

A software prerequisite for T4D Control is the latest version of Microsoft SQL Server.

For specific supported versions of Windows and Microsoft SQL Server refer to the latest T4D Release Notes [here](#).

Supported Languages

| | |
|----------------------|----------|
| Bulgarian | Japanese |
| Chinese (Simplified) | Russian |
| English | Spanish |
| French | Italian |
| German | |

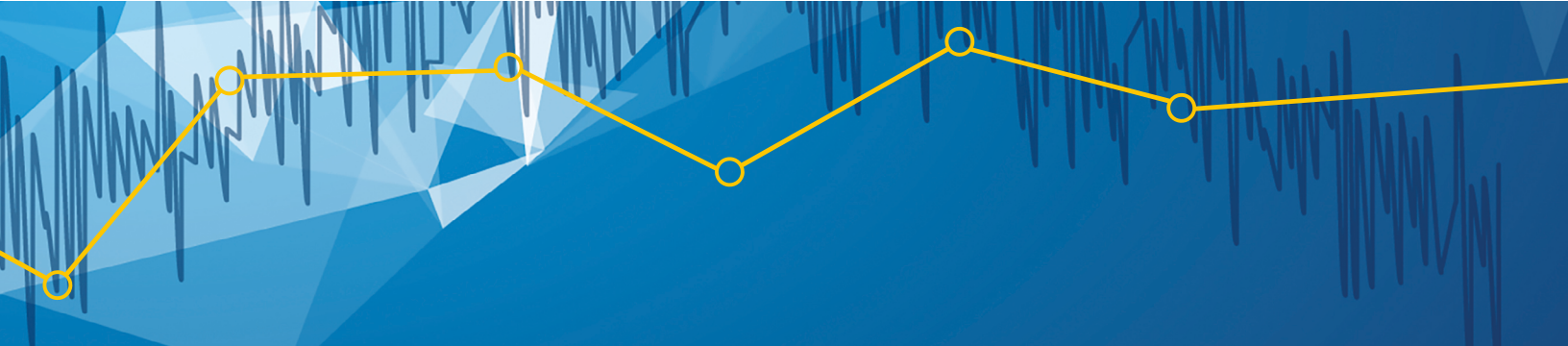
| Category | Feature | Access | Field | Intermediate | Advanced | Geotechnical |
|---|---|---------------------------------|-------|--------------|----------|--------------|
| Optical/Total Station (TS) | Automatic TS import from Trimble Connect | x | x | x | x | |
| | Post-processed TS data | x | x | x | x | |
| | TS control | | x | x | x | |
| | Support for Settop M1 (no data loss) | | x | x | x | |
| | Processing data of single TS | | x | x | x | |
| | Support external temperature sensor | | x | x | x | x |
| | Integrity check on observations | x | x | x | x | |
| | Automatic and scheduled compensator calibration | | x | x | x | |
| | Alarming (TS) | x | x | x | x | |
| | Output of processed coordinates | x | x | x | x | |
| | Reporting of 1,2 and 3 sigma errors | | x | x | x | |
| | Trimble VISION support | | x | x | x | |
| | SX10/12 TS and image support | | x | x | x | |
| | Enhanced site setup workflow | | | x | x | |
| | Network adjustment (multiple TS) | x | | x | x | |
| | Stored time series of processed results | x | | x | x | |
| | GNSS | Receiver connection and control | | | x | x |
| Non-Trimble receiver connection | | | | x | x | |
| RTK processing (VRS and baseline) | | | | x | x | |
| Post-processing | | | | x | x | |
| Alarming (GNSS) | | | | x | x | |
| Stored time series of processed results | | | | x | x | |
| Support for the MPS865 and SP90m | | | x | x | | |

| Category | Feature | Access | Field | Intermediate | Advanced | Geotechnical |
|---|--------------------------------------|--------|-------|--------------|----------|--------------|
| Optical + GNSS | Raw data storage | | | x | x | |
| | FTP mirroring of stored raw data | | | x | x | |
| | Real-time raw data routing | | | x | x | |
| | Combined processing optical and GNSS | | | x | x | |
| | Combined network adjustment | | | x | x | |
| Web application | Project and sensor management | x | | x | x | x |
| | Account management | x | | | x | x |
| | Charts | x | | | x | x |
| | Scatter plots | x | | | x | |
| | Map views | x | | | x | x |
| | Custom and composite views | x | | | x | x |
| | Webcam support | x | | | x | x |
| | Sensor groups and bulk creation | x | | | x | x |
| | Scheduled reporting | x | | | x | x |
| | Comprehensive analysis capabilities | x | | | x | x |
| | Advanced alarming capabilities | x | | | x | x |
| | Calculation sensor support | x | | | x | x |
| | Alignment-based monitoring | x | | | x | |
| Visual inspection tool for TS image | x | | | x | | |
| Geotechnical | Sensor agnostic file import | | | | x | x |
| | Inclinometer sensor chain support | | | | x | x |
| | Alarming (Geotech Sensors) | | | | x | x |
| | Gateway-based sensor connection | | | | x | x |
| | Measurand ShapeArray support | | | | x | x |
| Syscom Rock & MRC3000 vibration support | | | | x | x | |

The following sensor nodes are included with T4D editions. Additional nodes can be purchased based on project requirements.

| Category | Feature | Access | Field | Intermediate | Advanced | Geotechnical |
|-----------------------|--------------------|--------|-------|--------------|----------|--------------|
| Included Sensor Nodes | TS Node | N/A | 1 | 1 | 1 | |
| | GNSS Receiver Node | N/A | | 1 | 1 | |
| | Geotech Node | N/A | | | 5 | 5 |

For more information, see comprehensive feature matrix [here](#).



NEXT STEPS:

- ▶ Contact the Trimble Monitoring team for a demonstration of T4D by filling out the contact form here:

<https://monitoring.trimble.com/contact>

STAY CONNECTED:

- ▶ Subscribe to Receive Trimble Monitoring Communications

Subscribe

Contact your local Trimble Authorized Distribution Partner for more information

NORTH AMERICA
Trimble Inc.
10368 Westmoor Drive
Westminster CO 80021
USA

EUROPE
Trimble Germany GmbH
Am Prime Parc 11
65479 Raunheim
GERMANY

ASIA-PACIFIC
Trimble Navigation
Singapore PTE Limited
3 HarbourFront Place
#13-02 HarbourFront Tower Two
Singapore 099254
SINGAPORE

© 2021, Trimble Inc. All rights reserved. Trimble, and the Globe & Triangle logo are trademarks of Trimble Inc. registered in the United States and in other countries. 4D Control and VISION are trademarks of Trimble Inc. Microsoft and Windows are either registered trademarks or trademarks of Microsoft Corporation in the United States and/or other countries. All other trademarks are the property of their respective owners. PN 022516-564C (12/21)